

INTERLINKING HANDRAIL OPTIONS

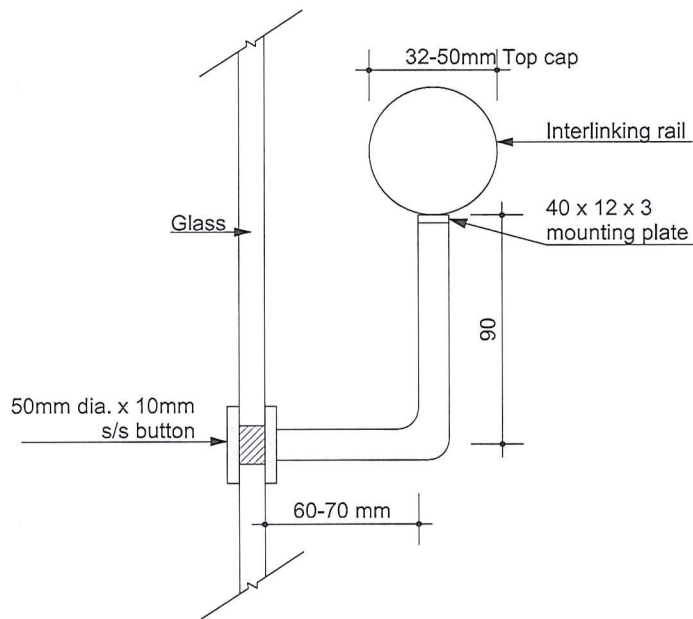
Installation of interlinking rails and handrail brackets

Brackets (refer option 4 drawing GS-10)

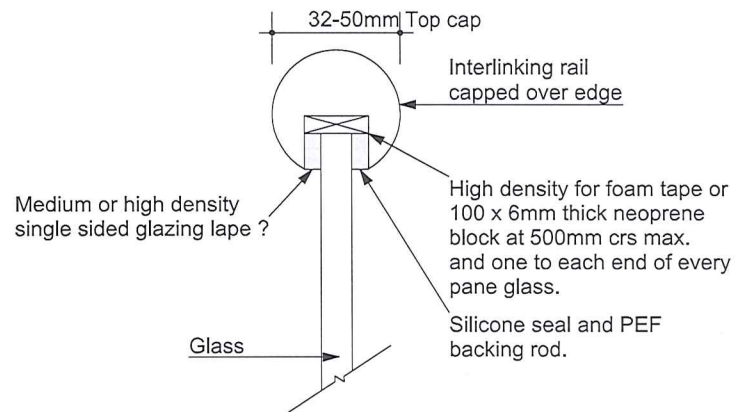
When installing handrail brackets, rigid and load bearing bushes and gaskets must be placed between glass and any metal component to prevent contact.

Handrails

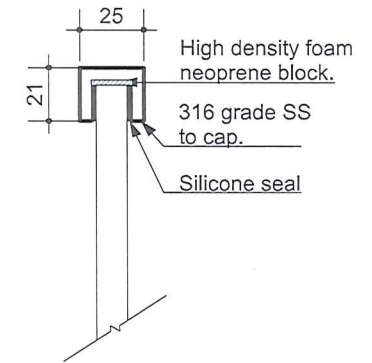
For an interlinking rail that is capped over the top edge of a glass balustrade, the rail must ensure that there is no glass and metal contact, and that setting blocks are placed at each end. The following detail is an acceptable method of installation.



Handrail detail 1



Handrail detail 2



Cap detail 3